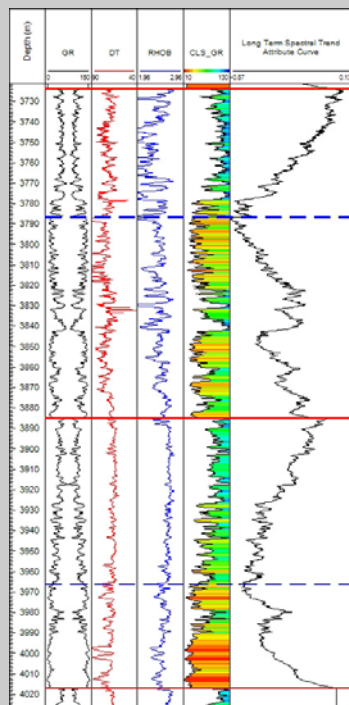


Field Seminar

OUTCROP ANALOGUES OF FLUVIAL - TIDAL RESERVOIRS

*A FIELD COURSE TO THE
TREMP-GRAUS AND EBRO BASINS
SOUTH-CENTRAL PYRENEES, SPAIN*



19 - 24 September 2011



*Provide a better understanding in subsurface
fluvial-tidal reservoir evaluation and correlation*

ENRES
INTERNATIONAL

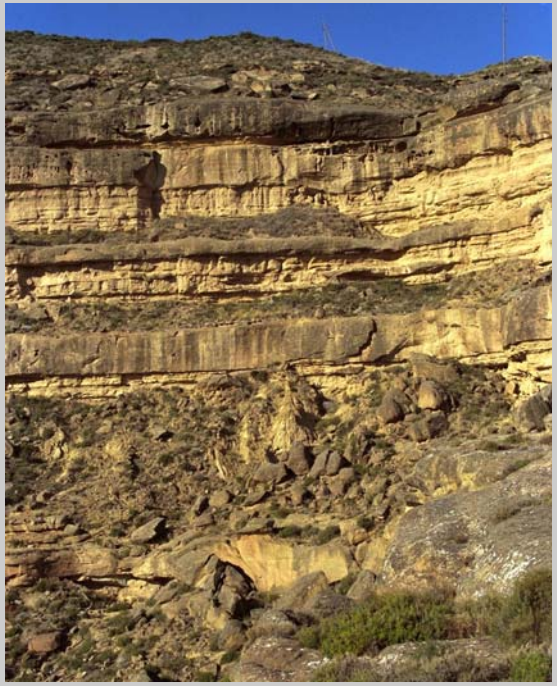


OUTCROP ANALOGUES OF FLUVIAL - TIDAL RESERVOIRS



FIELD SEMINAR 19 - 24 SEPTEMBER 2011

ENRES International organises a 5-days non-exclusive field course in the south-central Pyrenees and Ebro basin in Spain. The course will visit selected areas for an optimal detailed observation of a number of outcrop analogues. Each locality offers superb 3-D exposures and allows close observation of all aspects of the sedimentology and stratigraphy of fluvial-tidal deposits. Examples of subsurface examples are shown during the field seminar and compared with the various outcrops. Participants will get a better understandig of the geological dimensions and how to apply these to subsurface correlations.

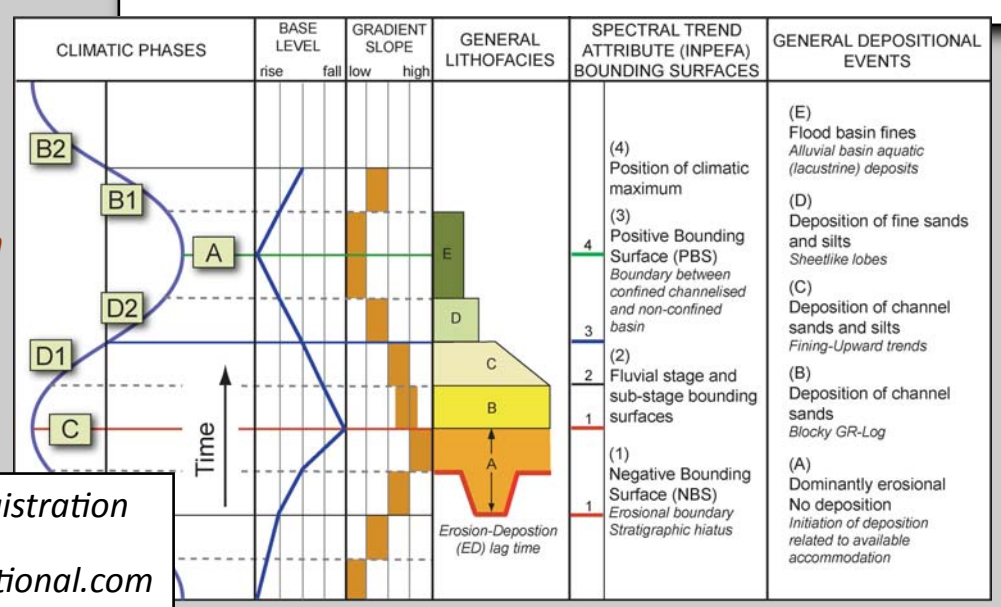


some of the topics

- > interpretation of sedimentary structures and relation to bedforms and flow dynamics in fluvial channels
- > criteria for recognising tidal influence in fluvial channels
- > diagnostic attributes of tidal channel deposits
- > reservoir features in the different types of fluvial channels
- > fluvial facies variability in time and space related to climate change
- > stratigraphy of fluvial sandbodies and their geometrical dimensions
- > how to correlate fluvial sandbodies in the subsurface

Please register before August 15, 2011

by e-mail to dnio@enresinternational.com



For more information and registration please contact: Djin Nio - dnio@enresinternational.com